



American Statistical Association

SAN FRANCISCO BAY AREA CHAPTER

CALENDAR

*** RESCHEDULED DUE TO EARTHQUAKE ***

DECEMBER 14, 1989 THURSDAY Nicholas Jewell
"Statistical Analysis of HIV Infectivity"

JANUARY 11, 1990 THURSDAY Ingram Olkin
"Meta-Analysis: Current Issues in Research Synthesis"

JANUARY 17, 1990 WEDNESDAY Daniel Rubinfeld
"Estimating Litigation Damages"

JOINT GENERAL APPLICATIONS AND BIostatISTICS PROGRAM

SPEAKER: Nicholas P. Jewell
Professor of Biostatistics and Statistics
University of California, Berkeley

TOPIC: "STATISTICAL ANALYSIS OF HIV INFECTIVITY BASED ON PARTNER STUDIES"

Partner studies produce data on the infection status of partners of individuals known or assumed to be infected with the Human Immunodeficiency Virus (HIV) after a known or estimated number of contacts. Previous studies have assumed a constant probability of transmission (infectivity) of the virus at each contact. Recently, interest has focused on the possibility of heterogeneity of infectivity across partnerships. This talk will discuss parametric and nonparametric procedures based on partner data to examine the risk of infection after a given number of contacts. Graphical methods and inference techniques will be presented which allow the investigator to evaluate the constant infectivity model and consider the impact of heterogeneity of infectivity, error in measurement of the number of contacts and regression effects of other covariates. The majority of the methods can be computationally implemented easily with use of software to fit generalized linear models. The concepts and techniques are closely related to ideas from discrete survival analysis. A dataset of heterosexual transmission will be used to illustrate the methods. The material is joint work with Stephen C. Shiboski.

DATE: December 14, 1989 (Thursday)
3:30 - 4:00 Coffee
4:00 - 5:00 Presentation

PLACE: Shultz Auditorium
Health Resources and Policy Building

Directions: From El Camino in Palo Alto, drive onto Palm Drive heading toward the university. At Campus Drive, turn right. The Human Resources and Policy Building will be on your left on Campus Drive near the multi-story parking structure in which free parking is available. See map on the reverse of this announcement.

There will be an informal dinner after the talk.

COUNSEL OF CHAPTERS REP.
Alvin D. Wiggins
(916) 752-7623

PRESIDENT
Florence Van Geem
(415) 271-5987

PRESIDENT ELECT
Kelvin K. Lee
(415) 852-3253

**VICE PRESIDENT
GENERAL APPLICATIONS PROGRAMS**
Dean H. Fearn
(415) 881-3447

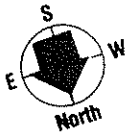
**VICE PRESIDENT
BIostatistical PROGRAMS**
Mike Tarter
(415) 642-4610

TREASURER
Anna Bagniewska
(415) 855-5289

SECRETARY
Rose Ray
(415) 856-9400

ASQC TASK GROUP REP.
Fred Khorasani
(408) 779-0035

ASQC STATISTICAL TASK GROUP
Curtis Engelhard
(408) 765-9325

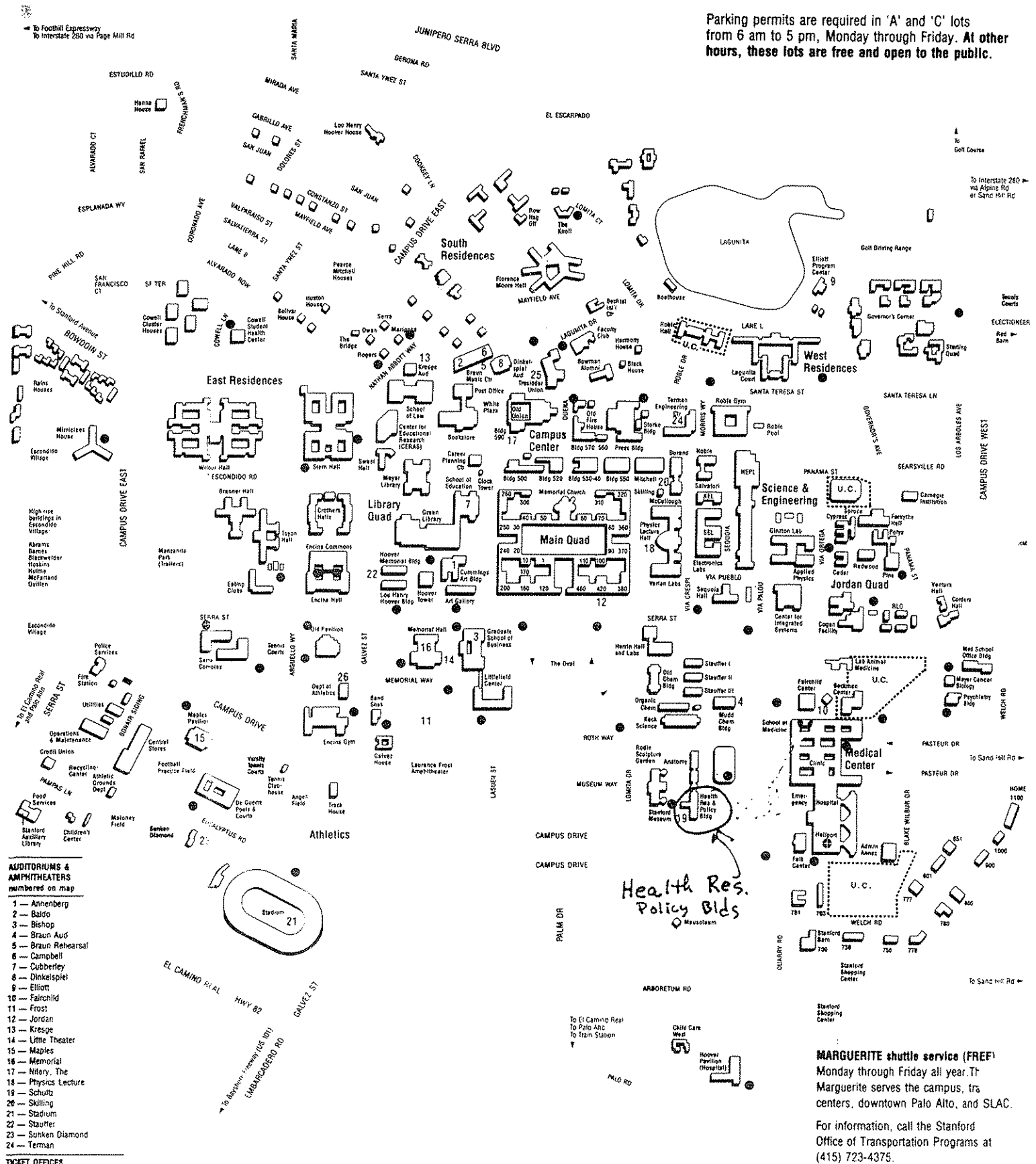


STANFORD UNIVERSITY

METER or TIME LIMIT parking. 6 am to 5 pm, Monday through Friday

DISABLED PERSON parking. 24-hour enforcement, every day. **\$50 minimum fine** for parking in these areas without the proper permit.

Parking permits are required in 'A' and 'C' lots from 6 am to 5 pm, Monday through Friday. **At other hours, these lots are free and open to the public.**



- AUDITORIUMS & AMPHITHEATERS**
numbered on map
- 1 - Annenberg
 - 2 - Baldo
 - 3 - Bishop
 - 4 - Braun Aud
 - 5 - Braun Rehearsal
 - 6 - Campbell
 - 7 - Cubberley
 - 8 - Dinkelspiel
 - 9 - Elliott
 - 10 - Fairchild
 - 11 - Frost
 - 12 - Jordan
 - 13 - Krespe
 - 14 - Little Theater
 - 15 - Maples
 - 16 - Memorial
 - 17 - Nitery, The
 - 18 - Physics Lecture
 - 19 - Schultz
 - 20 - Skilling
 - 21 - Stadium
 - 22 - Stauffer
 - 23 - Sunken Diamond
 - 24 - Terman
- TICKET OFFICES**
- 25 - President Memorial Union
 - 26 - Department of Athletics

MARGUERITE shuttle service (FREE)
Monday through Friday all year. Tr Marguerite serves the campus, tra centers, downtown Palo Alto, and SLAC.
For information, call the Stanford Office of Transportation Programs at (415) 723-4375.

U.C. area under construction

BIostatistics PROGRAM

SPEAKER: Ingram Olkin
Professor of Statistics
Stanford

TOPIC: "META-ANALYSIS:Current Issues in Research Synthesis"

The concept of aggregating the results of different experiments has a history of at least 50 years in the physical and agricultural sciences. It was the introduction of this concept in the social and health sciences in the late 1970's that set the stage for a stream of papers pooling results from randomized controlled trials in medicine as well as other fields.

In this talk, we review the history of Meta-Analysis, discuss some of the critical controversial issues and pose some technical problems that remain unsolved.

DATE: January 11, 1990 (Thursday)
3:30 - 4:00 Coffee
4:10 - 5:00 Presentation

PLACE: University of California at San Francisco
Nursing 721

GENERAL APPLICATIONS PROGRAM

SPEAKER: Daniel Rubinfeld
School of Law
Boalt Hall
University of California, Berkeley

TOPIC: "Estimating Litigation Damages"

The application of forecasting techniques involving regression or ARIMA models to the court's determination of damages will be discussed. Examples will be based upon a number of recent tort and anti-trust cases.

DATE: January 17, 1990 (Wednesday)
3:30 - 4:00 Coffee
4:10 - 5:00 Presentation

PLACE: Kaiser Oakland
1950 Franklin
Second Floor Cafeteria and Conference Room

STATS:The magazine for Student of Statistics.

The latest issue of this new ASA publication has articles on the space shuttle Challenger, "Statistics and the Death Penalty" as well as profiles of several statistics departments and information on summer internship programs. The publication is aimed at beginning statisticians and students of statistics. The ASA encourages chairpersons of departments of statistics to obtain copies for distribution throughout their recruitment area. Complementary copies of the first issue are available through the national office. (Bulk rate of \$2.00 per copy for orders of 10 or more). American Statistical Association, 1429 Duke Street, Alexandria, VA 22314-3402.

SF Bay Area Chapter Business

ADDRESS CHANGES/DUES:

Changes of address should be sent to the chapter treasurer, Anna Bagniewska at the address listed below.

Several members are more than a year behind in local chapter dues. Please check the date on your mailing label. The printed date is the last time that we received your dues. If you are overdue please send \$8 to:

Anna Bagniewska
Syntex Labs
34012 Hillview Avenue L-2500
Palo Alto, CA 94303

=====

EMPLOYMENT OPPORTUNITIES

1. BIOANALYST II, Syntex, Palo Alto

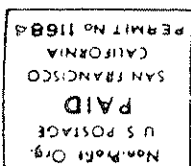
RESPONSIBILITIES: Provide analysis support to biostatisticians using SAS package and other computer software packages such as BMDP. Establish the accuracy of the data prior to analysis. Create SAS files, produce final statistical report tables, data listings, CRF tabulations, and graphs. Verify analysis outputs/results prior to presenting them to the biostatisticians or other clients. Ensure accuracy, and timeliness. Document analysis programs, corrections to the dataset, and archive files following standard operating procedures.

REQUIREMENTS: B.S in statistics, computer science or related field with at least 2 years of experience. or M.S. degree in similar field with at least 1 year of experience in SAS programming. The candidate must know routinely used SAS procedures well. Must be able to communicate and interact with biostatisticians and other co-workers. Have interest in statistical applications, software languages, and the use of computer facilities and systems.

SEND RESUME: Roxanne Naes, Staffing Department, L-1108, Syntex Labs, 3401 Hillview Ave., Palo Alto, CA 94304.
Or Call Ling-ling Tsao (415) 855-6532.

MAILED NOV 20, 1989

921 Regal Rd
Berkeley, CA 94708



American Statistical Association
SAN FRANCISCO BAY AREA CHAPTER





American Statistical Association

SAN FRANCISCO BAY AREA CHAPTER

CALENDAR

NOVEMBER 30, 1989 THURSDAY Walter Hauck
 "Logit Models: Cluster Effects, Population
 Averaging, and Omitted Covariates"

*** RESCHEDULED DUE TO EARTHQUAKE ***

DECEMBER 14, 1989 THURSDAY Nicholas Jewell
 "Statistical Analysis of HIV Infectivity"

BIostatistics PROGRAM

SPEAKER: Walter W. Hauck
 Department of Epidemiology and Statistics

UCSF

TOPIC: "LOGIT MODELS: Cluster Effects, Population Averaging, and Omitted
 Covariates"

When estimating odds ratios there are two phenomena that one must be aware of.

The first of these phenomena is that population-averaged and cluster specific logistic models have parameters with different interpretations. This is in contrast to models for Gaussian outcomes where there is no distinction. In addition, the population-averaged logistic coefficients will tend to be closer to the null than the corresponding cluster-specific coefficients.

The second of these phenomena results when "maverick" covariates are omitted from logistic models. By "maverick" covariates we mean variables that are related either to the outcome or the exposure, but not both, and hence are not confounders in the classical sense. Regardless, omission of mavericks biases logistic coefficients towards the null value.

The theme of this talk is that these are related phenomena; that they are more easily understood by considering them together. The end result, it is hoped, is a better understanding of the interpretation of odds ratios and a basis for deciding on the most appropriate analyses.

DATE: November 30, 1989 (Thursday)
 3:30 - 4:00 Coffee (479 Kerr Hall)
 4:10 - 5:00 Presentation (176 Chemistry)

PLACE: University of California at Davis

Visitors can park in lot VP47 or lot VP25; S2. is quarters is required. There is also parking available in lot 11. Parking in lot 11 is for 2 hours or less only.

See the reverse of this announcement for a map of the Davis Campus. Kerr Hall is Building 83 and Chemistry is building 9.

There will be an informal dinner after the talk.

COUNSEL OF CHAPTERS REP.
 Alvin D. Wiggins
 (816) 752-7623

PRESIDENT
 Florence Van Geem
 (415) 271-5087

PRESIDENT ELECT
 Kelvin K. Lee
 (415) 852-3253

**VICE PRESIDENT
 GENERAL APPLICATIONS PROGRAMS**
 Dean H. Fearn
 (415) 881-3447

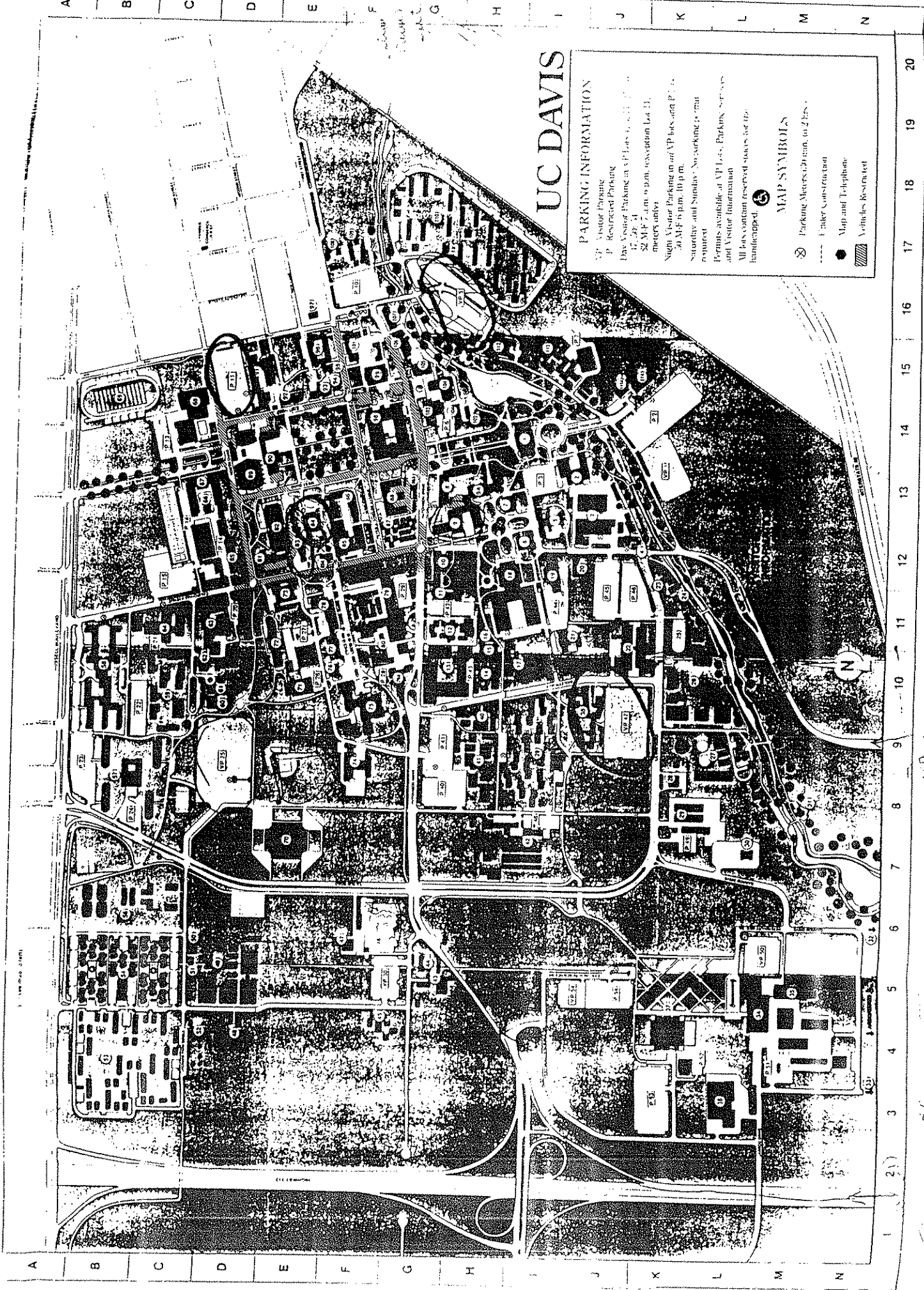
**VICE PRESIDENT
 BIOSTATISTICAL PROGRAMS**
 Mike Tarter
 (415) 642-4604

TREASURER
 Anna Bagniewska
 (415) 855-5289

SECRETARY
 Rose Ray
 (415) 858-9400

ASQC TASK GROUP REP.
 Fred Khorasani
 (408) 779-0035

ASQC STATISTICAL TASK GROUP
 Curtis Engelhard
 (408) 765-9325



UC DAVIS

PARKING INFORMATION

- VP - Visitor Parking
- P - Restricted Parking
- Day Visitor Parking in VP Lots 1, 2, 3, 4, 5, 6, 7, 8, 9, 10, 11, 12, 13, 14, 15, 16, 17, 18, 19, 20
- 32 MP 7 a.m. to 9 p.m. reservation lot 11, meters apply
- Night Visitor Parking in all VP lots and P 1, 2, 3, 4, 5, 6, 7, 8, 9, 10, 11, 12, 13, 14, 15, 16, 17, 18, 19, 20
- 20 MP 5 p.m. to 10 p.m.
- Saturday and Sunday - No parking permit required
- Permits available at VP Lots. Parking permits and Visitor Information
- All lots contain reserved spaces for the handicapped

MAP SYMBOLS

- Parking Meters (20 min. to 2 hrs.)
- Under Construction
- Map and Telephone
- Vehicles Restricted

1 2 3 4 5 6 7 8 9 10 11 12 13 14 15 16 17 18 19 20

UCD
SUC

1
2
3
4
5
6
7
8
9
10
11
12
13
14
15
16
17
18
19
20

BIostatistics PROGRAM

Nicholas P. Jewell
Professor of Biostatistics and Statistics
University of California, Berkeley

TOPIC: "STATISTICAL ANALYSIS OF HIV INFECTIVITY BASED ON PARTNER STUDIES"

Partner studies produce data on the infection status of partners of individuals known or assumed to be infected with the Human Immunodeficiency Virus (HIV) after a known or estimated number of contacts. Previous studies have assumed a constant probability of transmission (infectivity) of the virus at each contact. Recently, interest has focused on the possibility of heterogeneity of infectivity across partnerships. This talk will discuss parametric and nonparametric procedures based on partner data to examine the risk of infection after a given number of contact.s Graphical methods and inference techniques will be presented which allow the investigator to evaluate the constant infectivity model and consider the impact of heterogeneity of infectivity, error in measurement of the number of contacts and regression effects of other covariates. The majority of the methods can be computationally implemented easily with use of software to fit generalized linear models. The concepts and techniques are closely related to ideas from discrete survival analysis. A dataset of heterosexual transmission will be used to illustrate the methods. The material is joint work with Stephen C. Shiboski.

DATE: December 19, 1989 (Thursday)
3:30 - 4:00 Coffee
4:00 - 5:00 Presentation

PLACE: Shultz Auditorium
Health Resources & Policy Building

Directions: From El Camino in Palo Alto, drive onto Palm Drive heading toward the university. At Campus Drive, turn right. The Medical Center will be on your right across from the multi-story parking structure in which free parking is available. See map on the reverse of this announcement.

There will be an informal dinner after the talk.

=====
SF Bay Area Chapter Business

ADDRESS CHANGES/DUES:

Changes of address should be sent to the chapter treasurer, Anna Bagniewska at the address listed below.

Several members are more than a year behind in local chapter dues. Please check the date on your mailing label. The printed date is the last time that we received your dues. If you are overdue please send \$8 to:

Anna Bagniewska
Syntex Labs
34012 Hillview Avenue L-2500
Palo Alto, CA 94303

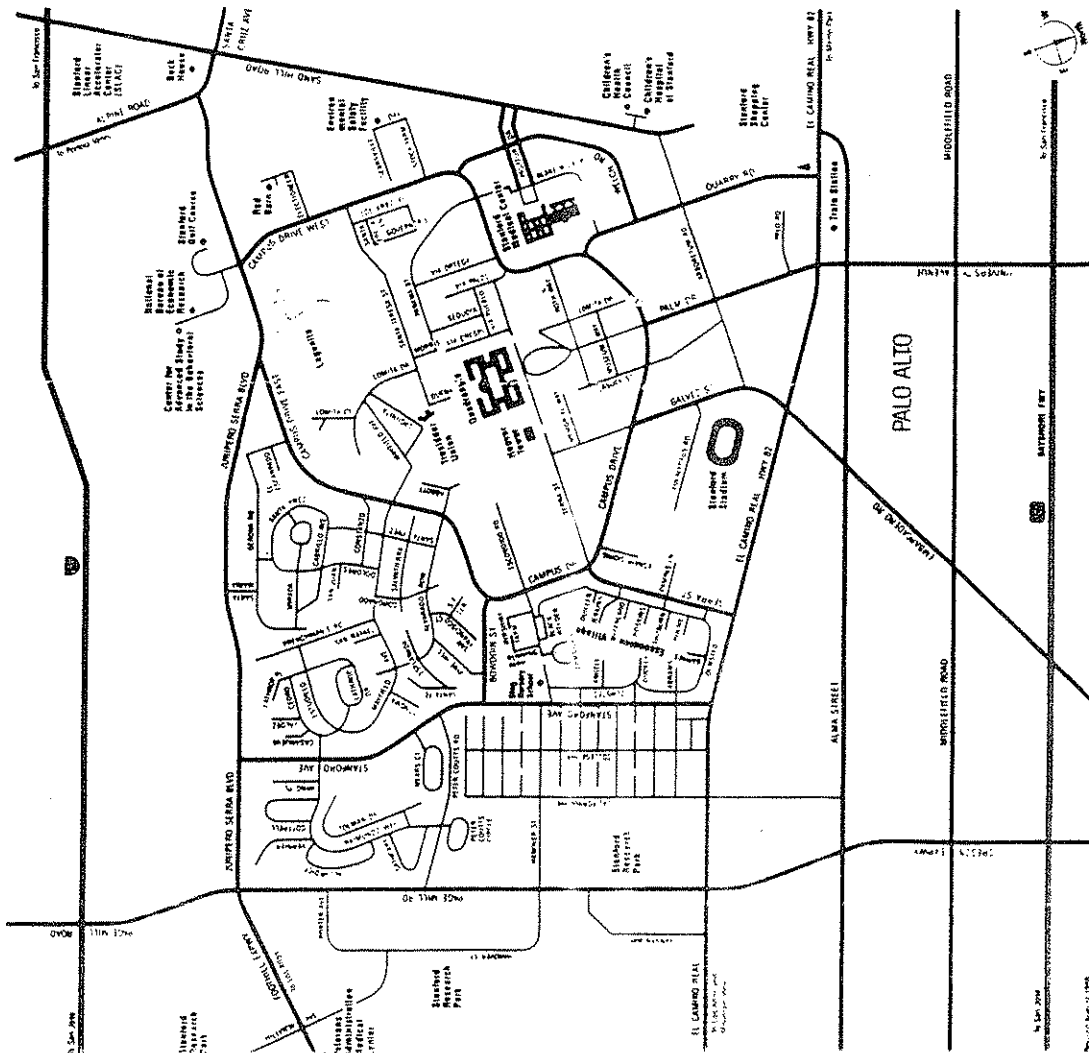


SAN FRANCISCO BAY AREA CHAPTER
American Statistical Association

921 Regal Rd
Berkeley, CA 94708

Non-Profit Org.
U S POSTAGE
PAID
SAN FRANCISCO
CALIFORNIA
PERMIT No. 11684

VICINITY MAP





American Statistical Association

SAN FRANCISCO BAY AREA CHAPTER

MESSAGE FROM THE PRESIDENT

Dear Colleagues:

September, 1989

I am pleased to be serving as President of the Chapter for 1989-1990. The Chapter currently has close to 500 members and covers a wide geographic area from the North Bay to the South Bay, and as far east as Davis. Our members represent academia, finance, government, research, services and production. It will be my challenge to meet the professional needs of such a diverse membership. This would be close to impossible if not for the other officers of the Chapter. It is my pleasure to introduce them to you:

Kelvin Lee is President Elect and has served the Chapter for 4 years. Kelvin has been employed at the Veterans Administration for the last 11 years. His area of professional expertise is clinical trials. During the year, I will look toward Kelvin for help in developing solutions in order to better serve the members. He also will begin the planning for the 1990-1991 year.

The Chapter has two Vice Presidents whose responsibilities are to plan the monthly meetings. Dean Fearn is V.P. of the General Applications Program and Mike Tarter is V.P. of the Biostatistical Program. Dean is a professor at Hayward whose area of expertise is branching processes. He has been active in various activities of the Chapter for over 10 years. This is his second year as an officer for organizing the General Applications Program. Even though this is his first year as an officer, Mike is a long-time contributor to the local Chapter. He was instrumental in integrating the Biostatistical community with the Chapter in the early '80s. Mike currently is a professor at UC Berkeley working on various grants. Areas of expertise include computer approaches to identifying distributions and computer graphics.

CHIEF OF CHAPTERS REP.
Alvin D. Wiggins
(916) 752-7623

PRESIDENT
Florence Van Geem
(415) 271-5987

PRESIDENT ELECT
Kelvin K. Lee
(415) 852-3253

VICE PRESIDENT
GENERAL APPLICATIONS PROGRAMS
Dean H. Fearn
(415) 881-3447

VICE PRESIDENT
BIostatistical PROGRAMS
Mike Tarter
(415) 642-4610

TREASURER
Anna Bagniewska
(415) 855-5289

SECRETARY
Rose Ray
(415) 856-9400

ASQC TASK GROUP REP.
Fred Khorasani
(408) 779-0035

ASQC STATISTICAL TASK GROUP
Curtis Engelhard
(408) 765-9325

Anna Bagniewska is serving her third year as Treasurer. Besides managing the books, maintaining the membership roster and mailing list, Anna has been very successful in organizing meetings in the Palo Alto area. Anna is a manager at Syntex Labs, coordinating the data reporting and collection functions.

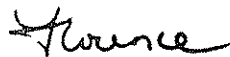
Rose Ray first worked with the Chapter in 1987 and is currently serving her second term as secretary. She is responsible for collecting the information, writing and production of the newsletter. Job openings and relevant announcements should be sent to her. Rose's professional interest is epidemiological techniques related to business applications.

Fred Khorasani and Curt Engelhart represent the local organization of the American Society of Quality Assurance. Since the two organizations share many common subjects of interest, the Chapter asked for representation from this organization. In the past, the Chapter and the ASQC Task Group have jointly sponsored meetings and one-day seminars.

Al Wiggins is the Chapter's representative to the Council of Chapters. The Council is a vehicle for local Chapters to communicate and share their concerns in a broader arena. Al has served the Chapter as an officer for over three years, including President, and is well equipped to serve the interests of this Chapter.

Even with this excellent team, we need your support in making this year successful. We feel that an important objective of any organization is to provide a forum where professionals can meet other local professionals. We want to see you (new faces and old friends) at our meetings and to encourage wider participation of our 500 members. Therefore, it is important to identify topics relevant to our members. If you have ideas for topics, speakers or places for the meetings, we would like to hear from you. If you know of visitors coming to your company or institution and who would make an excellent candidate as a speaker for the monthly meetings, please contact either Dean or Mike.

Our goal this year is to organize meetings responsive to the needs of the members. We look forward to serving you and hope to see many of you at the monthly meetings.



Florence van Geem

CALENDAR

OCTOBER 19, 1989 THURSDAY Nicholas Jewell
"Statistical Analysis of HIV Infectivity"
NOVEMBER 8, 1989 WEDNESDAY Donald Ylvisaker
"Statistics Inside the Lottery"

GENERAL APPLICATIONS PROGRAM

SPEAKER: Nicholas P. Jewell
Professor of Biostatistics and Statistics
University of California, Berkeley

TOPIC: "STATISTICAL ANALYSIS OF HIV INFECTIVITY BASED ON PARTNER STUDIES"

Partner studies produce data on the infection status of partners of individuals known or assumed to be infected with the Human Immunodeficiency Virus (HIV) after a known or estimated number of contacts. Previous studies have assumed a constant probability of transmission (infectivity) of the virus at each contact. Recently, interest has focused on the possibility of heterogeneity of infectivity across partnerships. This talk will discuss parametric and nonparametric procedures based on partner data to examine the risk of infection after a given number of contact.s Graphical methods and inference techniques will be presented which allow the investigator to evaluate the constant infectivity model and consider the impact of heterogeneity of infectivity, error in measurement of the number of contacts and regression effects of other covariates. The majority of the methods can be computationally implemented easily with use of software to fit generalized linear models. The concepts and techniques are closely related to ideas from discrete survival analysis. A dataset of heterosexual transmission will be used to illustrate the methods. The material is joint work with Stephen C. Shiboski.

DATE: October 19, 1989 (Thursday)
3:30 - 4:00 Coffee
4:00 - 5:00 Presentation

PLACE: Stanford University Medical Center
Room M106

Directions: From El Camino in Palo Alto, drive onto Palm Drive heading toward the university. At Campus Drive, turn right. The Medical Center will be on your right across from the multi-story parking structure in which free parking is available. See map on the reverse of this announcement.

Professor Bill Brown has kindly offered to be the local host. Refreshment will be served at his home following the presentation. Directions will be provided at the meeting. Although there will be no charge for this meeting, the chapter would like to get an idea of the attendance. Please notify Dean Fearn (415) 537-3439 or Mike Tarter (415) 624-4601, by OCTOBER 17.

GENERAL APPLICATIONS PROGRAM

SPEAKER: Donald Ylvsaker
Professor of Statistics
UCLA

TOPIC: "STATISTICS INSIDE THE LOTTERY"

The talk will cover events of interest which have transpired during a four year sting as Contract Statistician for the California and Colorado State Lotteries. In particular, the question of what has been learned over time will be addressed in various context. Topics will likely include physical equipment, inventory plans, computer simulations, randomization and issues of finance, security and marketing. There will be some focus on the lottery industry itself, and on odds and oddities which have surfaced. questions will be especially welcomed.

DATE: November 8, 1989 (Wednesday)
3:30 - 4:00 Coffee
4:00 - 5:00 Presentation

PLACE: Pacific Bell, San Ramon
2600 Camino Ramon
The Daffodil Room ICN95

=====
EMPLOYMENT OPPORTUNITIES

1. STATISTICIAN, SYSTEMS APPLICATIONS, INC., San Rafael

RESPONSIBILITIES: Perform statistical analyses related to air and water pollution. Seek imaginative approaches to probing and presenting data.

REQUIREMENTS: M.S in statistics or related field. In addition to statistical expertise, candidates should possess the oral and written communication skills necessary to present results to clients. Some statistical computing and consulting experience is preferred. Ability to use statistical packages (preferably SAS) is required.

COMPANY: Systems Applications, Inc. is an environmental consulting company providing the U.S. Environmental Protection Agency and other governmental and industrial organizations with consulting services related to air and water pollution.

SEND RESUME: Job # 1-P-90, Systems Applications, Inc.
101 Lucas Valley Road, San Rafael, CA 94903.
Equal Opportunity Employer.



SAN FRANCISCO BAY AREA CHAPTER
American Statistical Association

921 Regal Rd
Berkeley, CA 94708



MAILED 9/25/89

CHAPTER NEWS

Elizabeth King was awarded a citation and plaque for outstanding local chapter member at the August ASA national meetings in Washington D.C. This award was part of the ASA sesquicentennial celebration. The citation read in part:

For more than 20 years of devoted and enthusiastic support of the chapter as follows:

- o Chapter President 1986- 1987
- o Handled local arrangement for National meeting with grace and aplomb.
- o Served as a role model and catalyst for the growth of the chapter and enhancement of the membership.

SF Bay Area Chapter Business

DUES:

At the June 1989 business meeting Article 3 (Dues) of the Chapter's By-Laws was amended as follows:

1. The annual dues of regular and associate members be increased from \$6.00 to \$8.00.
2. The annual dues of student members be increased from \$1.00 to \$2.00.

Several members are more than a year behind in local chapter dues. Please check the date on your mailing label. The printed date is the last time that we received your dues. If you are overdue please send \$8 to:

Anna Bagniewska
Syntex Labs
34012 Hillview Avenue L-2500
Palo Alto, CA 94303



American Statistical Association

SAN FRANCISCO BAY AREA CHAPTER

ANNUAL BUSINESS MEETING AND ELECTION OF OFFICERS

Preceded by:

JOINT GENERAL APPLICATIONS AND BIostatISTICS PROGRAM

SPEAKER: Michael Orkin
Professor of Statistics
California State University at Hayward

TOPIC: "ODDS MAKING AND SPORTS BETTING: BOTH SIDES OF THE FENCE"

Dr. Orkin will discuss betting structures from the gambler's and sports book maker point of views. This will include the pointy spread system, money line bets, futures bets, proportion bets and pari-mutuel betting.

DATE: June 14, 1989 (Wednesday)
3:30 - 4:00 Coffee
4:00 - 5:00 Presentation

PLACE: Syntex Corporation, Palo Alto
3401 Hillview Avenue
Room A2-1, Gallery Building

For more detailed directions, call Kelvin Lee (415) 852-3253.

Dr. John Varaday will be the local host, there will be a special get together after the business meeting in the Gallery area.

COUNSEL OF CHAPTERS REP.
Alvin D. Wiggins
(916) 752-7623

PRESIDENT
Abraham Silvers
(415) 885-2615

PRESIDENT ELECT
Florence Van Geem
(415) 271-5987

VICE PRESIDENT
GENERAL APPLICATIONS PROGRAMS
Dean H. Feam
(415) 881-3447

VICE PRESIDENT
BIostatISTICS PROGRAMS
Kelvin K. Lee
(415) 852-3253

TREASURER
Anna Bagniewska
(415) 855-5289

SECRETARY
Rose Ray
(415) 856-9400

ASQC TASK GROUP REP.
Fred Khorasani
(408) 765-9318

ASQC STATISTICAL TASK GROUP
Curtis Engelhard
(408) 765-9325

EMPLOYMENT OPPORTUNITIES

1. STATISTICIAN/EPIDEMIOLOGIST, FAILURE ANALYSIS ASSOCIATES

RESPONSIBILITIES: Use methods of statistical epidemiology in the analysis of large volumes of accident data. Coordinate and manage tasks performed by research assistants.

REQUIREMENTS: Ph.D in biostatistics or Public Health. Experience with analysis of NCHS and SEER databases. SAS or other statistical analysis packages is an advantage.

COMPANY: Failure Analysis Associates is a national engineering and scientific services firm specializing in the analysis and prevention of engineering system and product failures.

SEND RESUME: Personnel Manager, Failure Analysis Associates, P.O. Box 51470, Palo Alto, CA 94303. Reference AD# rr 4.22
Equal Opportunity Employer.

2. STATISTICAL CONSULTANT, BANK OF AMERICA

RESPONSIBILITIES: Identify, conduct and implement credit scoring and behavior scoring projects in the Bankcard department. Interaction with multiple levels of management and with operating departments.

REQUIREMENTS: A Master's degree in statistics or related field and 1-2 years of experience. SAS and banking experience is preferred.

SEND RESUME: Arlene Frazier, Credit Risk Management #3407, Bank of America, 180 Montgomery Street, San Francisco, CA 94104.

3. SR. PROGRAMMER ANALYST, Kaiser Foundation Research, Oakland

RESPONSIBILITIES: Statistical programming for research investigators in medical and epidemiological studies. Develop data entry screens, maintain databases, generate reports of the results of analyses. Assist investigators in writing papers and grant proposals. Under the general guidance of the network administrator, maintain and upgrade as necessary, a Novell LAN, install new versions of network software and application programs, add new workstations and other hardware to the network. Provide consultation, support and training to department staff for LAN and PC applications. Provide consultation and programming support, as requested, to investigators at other Kaiser Permanente facilities.

REQUIREMENTS: B.S. in computer science, mathematics, statistics or life sciences; M.S. or PhD preferred. At least 5 years experience as a statistical programmer in life sciences or social sciences research environment. IBM mainframe experience in OS/MVS, JCL, TSO, SAS, PLI or related language as well as PC experience with MSDOS and dBase III is required. Experience with Novell LAN, SNA gateway, synchronous communication, desktop publishing, PC hardware interfacing, PC/SAS and Turbo-C is preferred.

SEND RESUME: Michelle Brent, KFRI/DOR, 3451 Piedmont, Oakland, CA 94611. Or call (415) 987-3083.

APPLICANT:

POSITION DESIRED: Mathematical Statistician

EXPERIENCE: Ten years (last four as a manager) at the U.S. Census Bureau. Experience in survey design, estimation procedures, technical report writing, oral presentations, methods for data collection, processing, and statistical analysis. Familiar with FORTRAN programming and statistical packages (SPSS, Minitab, SAS and BMDP). Versed in Deming's management philosophy.

EDUCATION: M.A. in Applied Math/Statistics, U.C. Santa Barbara, 1978

CONTACT: Robert Edson (703) 971-0245 after 3pm (Pacific)

SF Bay Area Chapter Business

DUES:

The Executive Committee of the SF Bay Area Chapter of the ASA is recommending that Article 3 (Dues) of the Chapter's By-Laws be amended as follows:

1. The annual dues of regular and associate members be increased from \$6.00 to \$8.00.
2. The annual dues of student members be increased from \$1.00 to \$2.00.

Those present at the June meeting will be asked to vote on these amendments. Passage of the amendments requires a two-thirds majority of members present and voting.

While costs of production of the newsletter (duplicating, preparation, and postage) and for the monthly meetings (e.g. meeting rooms, equipment rental) continue to rise, student dues have been held at \$1.00 since 1983 and non-student dues have been held at \$6.00 since 1980. The additional revenue will allow Chapter officers more latitude in planning and trying out more innovative activities, for example inviting out of state statisticians to present talks, workshops or short courses.

CHAPTER DUES: Several members are more than a year behind in local chapter dues. Please check the date on your mailing label. The printed date is the last time that we received your dues. If you are overdue please send \$6 to:

Anna Bagniewska
Syntex Labs
34012 Hillview Avenue L-2500
Palo Alto, CA 94304

ELECTION OF OFFICERS:

The following slate of officers for the 1989-1990 term have been proposed by the nominating committee.

President -Elect	Kelvin Lee, Biostatistician Veterans Administration, Palo Alto
Vice President General Applications	Dean Fearn, Statistics Department California State University at Hayward
Vice President Biostatistics	Mike Tarter, Biostatistics Department University of California, Berkeley
Treasurer	Anna Bagniewska, Biostatistician Syntex Labs, Palo Alto
Secretary	Rose Ray, Statistician Failure Analysis Assoc., Palo Alto

These recommendations will be voted upon at the June Business meeting. The Chapter wished to thank the nominating committee, Al Wiggins and Elizabeth King (and Mike Tarter who resigned from the committee when asked to stand for office.)

As is our custom, the President Elect, Florence Van Geem, Department of Economics and Statistics, Kaiser Foundation Health Plan will succeed Abe Silvers as President.

Al Wiggins, Professor of Statistics, University of California at Davis will continue his two year term as Council of Chapters Representative.

BERKELEY, CA 94708

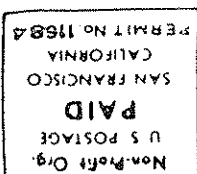
921 REGAL ROAD

DR. ROSE M. RAY 07/87

Mailed 4/24/89

Berkeley CA 94708

921 Regal Rd



American Statistical Association
SAN FRANCISCO BAY AREA CHAPTER





American Statistical Association

SAN FRANCISCO BAY AREA CHAPTER

GENERAL APPLICATIONS PROGRAM

SPEAKER: Michael Tarter
Professor of Biostatistics
University of California, Berkeley

TOPIC: "IDENTIFICATION OF DISTRIBUTION SUB COMPONENTS: A PERSONAL
COMPUTER APPROACH"

A method will be demonstrated which can be used to decompose a mixture of conditional or marginal distributions. The new approach does not depend upon normality or for that matter the assumption of any particular distributional model. Therefore, we have designed a computational system which can identify the composed component after the component has been separated.

The above procedures will be demonstrated and the theory which underlies both the decomposition and the model identification processes will be described.

DATE: May 17, 1989 (Wednesday)
3:30 - 4:00 Coffee (475 Kerr Hall)
4:00 - 5:00 Presentation (223 Olson Hall)

PLACE: University of California at Davis
223 Olson Hall

MODEL OF CHAPTERS REP.
Alvin D. Wiggins
(816) 752-7623

PRESIDENT
Abraham Silvers
(415) 885-2615

PRESIDENT ELECT
Florence Van Geem
(415) 271-5987

VICE PRESIDENT
GENERAL APPLICATIONS PROGRAMS
Dean H. Fearn
(415) 881-3447

VICE PRESIDENT
BIOSTATISTICAL PROGRAMS
Kelvin K. Lee
(415) 852-3253

TREASURER
Anne Bagiewska
(415) 855-5289

SECRETARY
Rose Ray
(415) 856-9400

ABQC TASK GROUP REP.
Fred Khorasani
(408) 765-9318

ABQC STATISTICAL TASK GROUP
Curtis Engelhard
(408) 765-9325

EMPLOYMENT OPPORTUNITIES

1. STATISTICIAN/EPIDEMIOLOGIST, FAILURE ANALYSIS ASSOCIATES

RESPONSIBILITIES: Use methods of statistical epidemiology in the analysis of large volumes of accident data. Coordinate and manage tasks performed by research assistants.

REQUIREMENTS: Ph.D in biostatistics or Public Health. Experience with analysis of NCHS and SEER databases. SAS or other statistical analysis packages is an advantage.

COMPANY: Failure Analysis Associates is a national engineering and scientific services firm specializing in the analysis and prevention of engineering system and product failures.

SEND RESUME: Personnel Manager, Failure Analysis Associates, P.O. Box 51470, Palo Alto, CA 94303. Reference AD# rr 4.22
Equal Opportunity Employer.

2. STATISTICIAN/APPLIED MATHEMATICIAN, TIBURON SYSTEMS

RESPONSIBILITIES: Development and implementation of mathematical algorithms, mathematical modeling, simulation, and algorithm evaluation.

REQUIREMENTS: Ph.D or Masters in Statistics or Applied Mathematics with strong statistical background. Experience in solving applied problems in the field is desirable. U.S. citizenship is required.

COMPANY: Tiburon Systems is a government contractor specializing in the areas of communications, command, control and intelligence.

SEND RESUME: Personnel Manager, Tiburon Systems, Inc., 2085 Hamilton Avenue, San Jose, CA 95125.

CHAPTER DUES: Several members are more than a year behind in local chapter dues. Please check the date on your mailing label. The printed date is the last time that we received your dues. If you are overdue please send \$6 to:

Anna Bagniewska
Syntex Labs
34012 Hillview Avenue L-2500
Palo Alto, CA 94304

BIostatistics PROGRAM

SPEAKER: Kathleen Lamborn
Northern California Cancer Center
Vice President American Statistical Association

TOPIC: "SURVIVAL ANALYSIS OF BRAIN TUMOR DATA"

DATE: May 17, 1989 (Wednesday)
3:30 - 4:00 Coffee
4:00 - 5:00 Presentation

PLACE: California State University at Hayward
North Science 215

DIRECTIONS: Parking is available in the coin lot (\$.50). There is a shuttle bus from the Hayward BART which runs approximately every 20 minutes.

FUTURE EVENTS:

June 14 (Wednesday) **ANNUAL BUSINESS MEETING** and election of officers, preceded by a talk by Michael Orkin (Cal State, Hayward). Syntex, Palo Alto.

APPLICANT:

POSITION DESIRED: Mathematical Statistician

EXPERIENCE: Ten years (last four as a manager) at the U.S. Census Bureau. Experience in survey design, estimation procedures, technical report writing, oral presentations, methods for data collection, processing, and statistical analysis. Familiar with FORTRAN programming and statistical packages (SPSS, Minitab, SAS and BMDP). Versed in Deming's management philosophy.

EDUCATION: M.A. in Applied Math/Statistics, U.C. Santa Barbara, 1978

CONTACT: Robert Edson (703) 971-0245 after 3pm (Pacific)